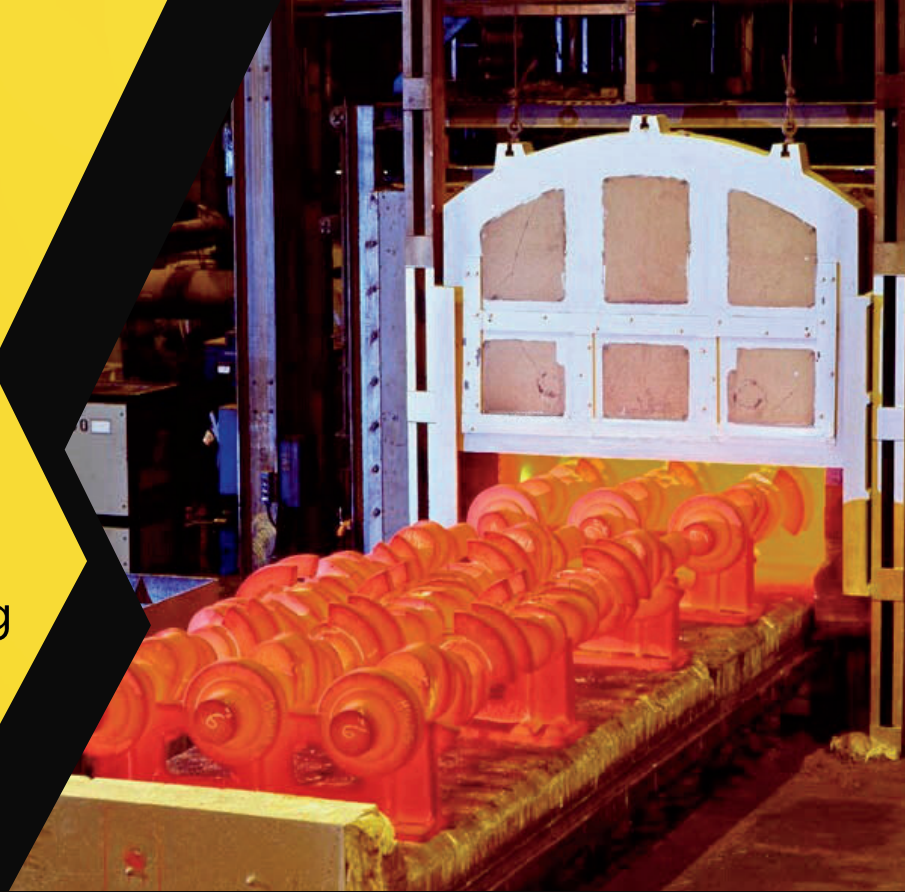




**ELLWOOD**  
Commercial Heat-Treating



# HEAT TREAT SERVICES

## Complete Heat Treating Solutions!

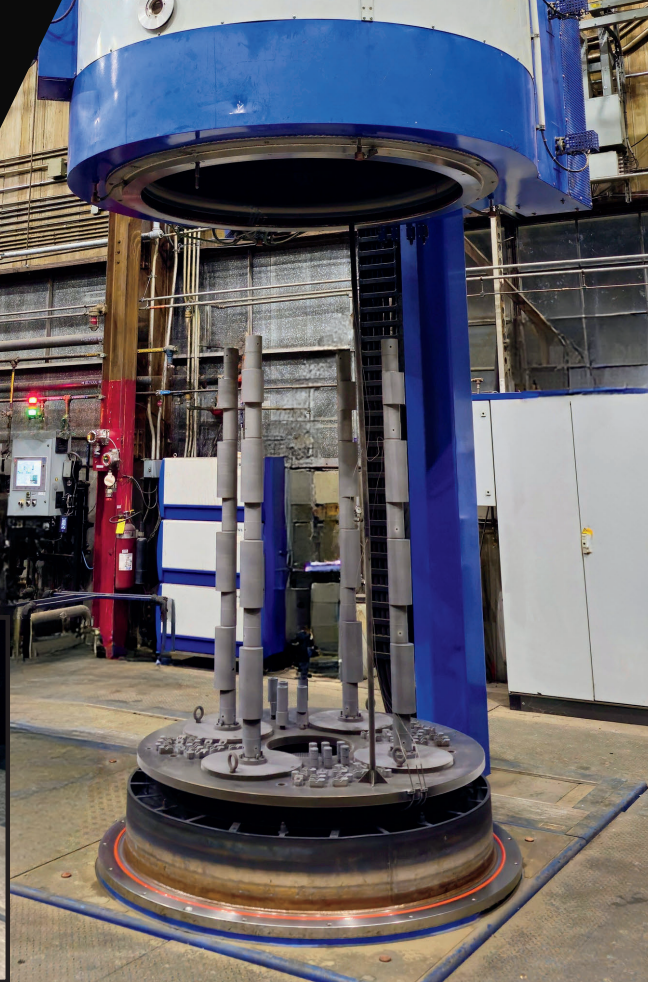
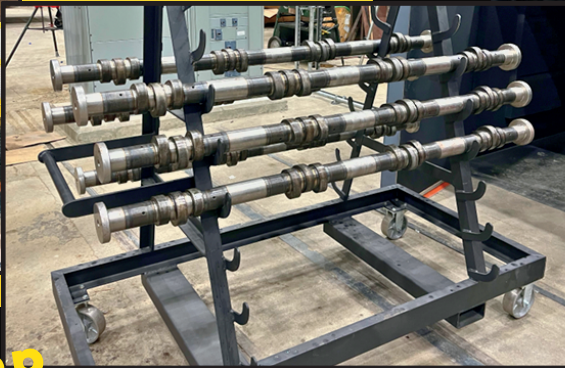
- **Normalize**
- **Anneal**
- **Normalize & Temper**
- **Quench & Temper**
- **Quench & Double Temper**
- **Stress Relieve**
- **Case Hardening**
  - **Induction Hardening**
  - **Ion Nitriding**
  - **Vertical Gas Nitriding**

**Cutting-edge facilities**

**Highly skilled workforce**

**State-of-the-art controls**

**Upgraded & modernized furnaces**



**Machine Shop  
Also Available!**

**Machining (Milling & Turning)**

**Sawing**

**Shot Blasting**

**FAST  
DELIVERY**

**Ask us about our  
Rapid Response Services!**

- Vertical and Horizontal Furnaces
- AMS2750 Rev H. Class 3 -- +/- 15 deg. F
- Liquid Quenching -
  - Polymer
  - Water (40,000# Max)
- Full Analytical Lab Capabilities -
  - Mechanical Properties
  - Brinell Testing
  - Ultrasonic & Mag Particle
- Failure Analysis
- Thermocouples/Furnace Charts
- Certifications
- Delivery/Pick up

**Furnace Work Zone  
76" x 120" x 511"**

**CONTACT US TODAY!**

Same Day / Next Day Quotes

**[ECHTSales@elwd.com](mailto:ECHTSales@elwd.com)**



**EllwoodCommercialHeatTreating.com**

*A division of Ellwood Crankshaft Group*

Hermitage, PA \* Sharon, PA \* Irvine, PA

Work Zone may vary based on process requested.